

**Savaria**

Ceiling Lift

Free Standing Support

**OWNER'S  
MANUAL**

---



## IMPORTANT

Be sure to read this entire manual before using the Free Standing Support (FSS). The information in this manual is important for the safety of the person being transferred and the operator, and for the proper use and maintenance of the FSS. Transfer always presents a potential risk and this manual provides important safety information that must be read and understood to help prevent injuries.

Unauthorized modifications to this FSS may affect its safety. Savaria Concord Lifts, Inc. will NOT be held responsible for any accidents, incidents or performance deficiencies that occur due to any unauthorized modification to this FSS. To avoid potential injury due to the use of inadequate parts, always use only Savaria replacement parts.

Regularly scheduled maintenance must be performed on your FSS by an Authorized Savaria Dealer to ensure safety and proper operation of the lift. Refer to the Maintenance section in this manual.

### NOTE

**If a serious incident occurs in relation to the device should be reported to the manufacturer or distributor of the device. In the European community, the incident shall be reported as well to the competent authority of the Member State in which the user and/or patient is established.**

### Legal Manufacturer:

Savaria Concord Lifts, Inc.  
2 Walker Drive  
Brampton, Ontario L6T 5E1  
Canada

### European Representative:

Advena Ltd.  
Tower Business Center,  
2nd Flr., Tower Street, Swatar,  
BKR 4013 Malta

### UK Authorized Representative:

Advena Ltd, Pure Offices, Plato Close,  
Warwick. CV34 6WE UK

Copyright © 2022  
Savaria Concord Lifts, Inc.  
All rights reserved.

---

## STANDARD NOTATIONS

The following notations may be used throughout this manual to emphasize important safety information, mechanical concerns, and other important information. Please review and follow all of these messages.



### **DANGER**

Danger messages indicate an imminently hazardous situation, which, if not avoided, results in death or serious injury. All danger messages feature a standard ISO safety alert symbol followed by the signal word **DANGER** in capitalized black lettering on a red background.



### **WARNING**

Warning messages indicate a potentially hazardous situation, which, if not avoided, could result in death or serious injury. All warning messages feature a standard ISO safety alert symbol followed by the signal word **WARNING** in capitalized black lettering on a dark yellow background.



### **CAUTION**

Caution messages indicate a potentially hazardous situation, which, if not avoided, could result in minor injuries. All caution messages feature a standard ISO safety alert symbol followed by the signal word **CAUTION** in capitalized black lettering on a yellow background.

---

### **NOTE**

Note messages provide information, such as reminders, general information about a previous statement, or additional guidelines that do not fit into the flow of the preceding text. All note messages include the signal word **NOTE** in capitalized white lettering on a blue background.

---

---

## CONTENTS

1. OVERVIEW .....	5
Intended Use .....	5
Product Life .....	5
Using This Manual .....	5
2. SAFETY INSTRUCTIONS .....	6
To Ensure Safety .....	6
3. DESCRIPTION .....	7
Installation .....	7
Symbols .....	16
4. SPECIFICATIONS .....	18
Dimensions .....	19
6. MAINTENANCE .....	22
Operator Maintenance Schedule .....	22
Dealer Maintenance Schedule .....	23
Inspection and Cleaning .....	23

---

# 1. OVERVIEW

## Intended Use

The Free Standing Support (FSS) is designed for use by caregivers and health care professionals to lift and transfer a person in a homecare, assisted-living or hospital environment. Transfer must be performed by a qualified operator as described in this manual. **Do NOT use the FSS for any other purpose.**

## Product Life

The FSS is designed for a useful life of 10 years after which time it must be replaced. To ensure this life span, you must perform the preventive maintenance as specified in the Maintenance section in this manual.



## WARNING

**Savaria Concord Lifts, Inc. cannot ensure complete safety for a FSS that has exceeded its useful life. Wear may cause failure or a part and lead to a patient fall.**

## Using This Manual

To ensure safe operation of the FSS, read this entire manual carefully, especially the Safety Instructions, before installing, using or maintaining the FSS. Failure to comply with all WARNINGS in this manual may result in injury. If there is anything you don't understand, contact your Authorized Savaria Dealer for further details.

Keep this manual with the FSS and ensure all operators are fully trained in the use of the lift with the FSS as described in this manual.

## 2. SAFETY INSTRUCTIONS

Keep these *Safety Instructions* with the FSS at all times. Read this entire manual before installing, using or maintaining the FSS.



### WARNING

**Do NOT use the FSS for any purpose other than to transfer a person. To ensure safety of the person being transferred and the operator, follow all Safety Instructions.**

**Do NOT push, bump or smash the rail or posts to avoid flipping the FSS or damaging components. Any damage to the structure could result an injury or death.**

### To Ensure Safety

- The FSS has a safe working load of 272 kg (600 lb), 200 kg (440 lb) or 130 kg (286 lb). Do NOT exceed this load. Refer to the span chart tag on the legs of the FSS or to the Specifications section in this manual for the maximum load allowed.
- The FSS must be installed by an Authorized Savaria Dealer.
- Ensure the FSS is used only with a Savaria ceiling track and ceiling lift.
- The FSS must be installed by a trained and Authorized Savaria Dealer. We recommend 2 persons to avoid any injury or damages to the ceiling if height is 98" (249 cm) or less.
- Check with a qualified health professional to ensure the person to be transferred has been deemed suitable for transfer.
- Take extra care with a person who is connected to electrodes, catheters or other medical devices to ensure safe transfer.
- Take care to avoid impact during transfer.
- Keep all components of the FSS clean and dry.
- Ensure all checks and actions are performed at the frequency indicated in the *Maintenance* section in this manual.
- Do NOT use as a swing seat.

### 3. DESCRIPTION

#### Installation

The FSS kit includes the items shown below.

**Figure 1**



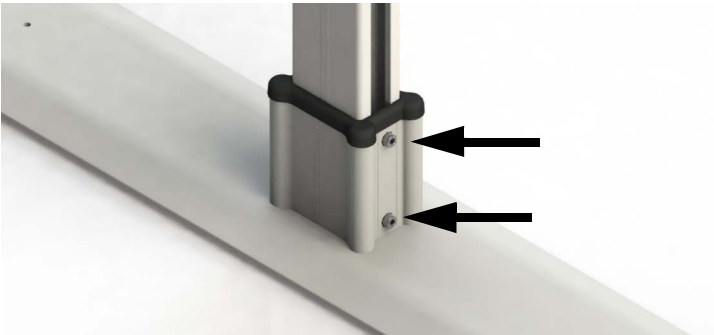
- 1 Install the posts in the bases (x2). Note that the posts will have to be inserted into the bases sideways (laying down on the floor) if the ceiling height is less than 96.25" (245 cm) as shown in Figure 3.

**Figure 2**



**Figure 3**

**2** Tighten the screws (x8) to a torque of 20 N-m, +/-3 (15 lb-ft).

**Figure 4**



- 3** Install the upper rail attachment assembly (x2). Note that the upper rail attachment assemblies will have to be installed with the posts tilted sideways slightly if the ceiling height is less than 97.5" (248 cm) as shown in Figure 6.

**Figure 5**

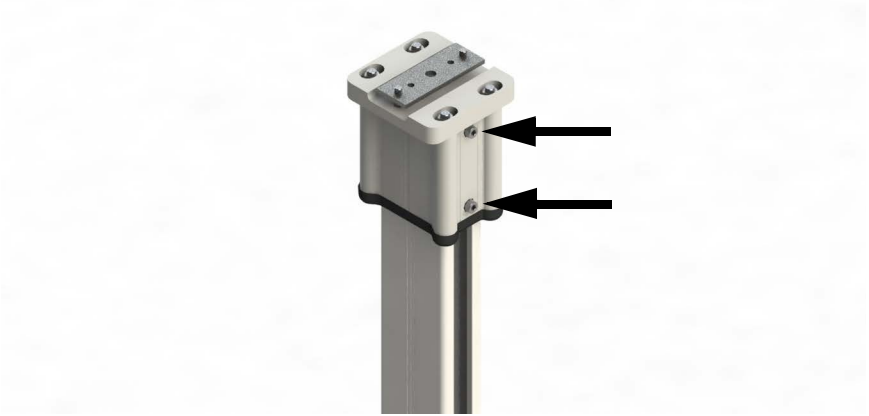


**Figure 6**



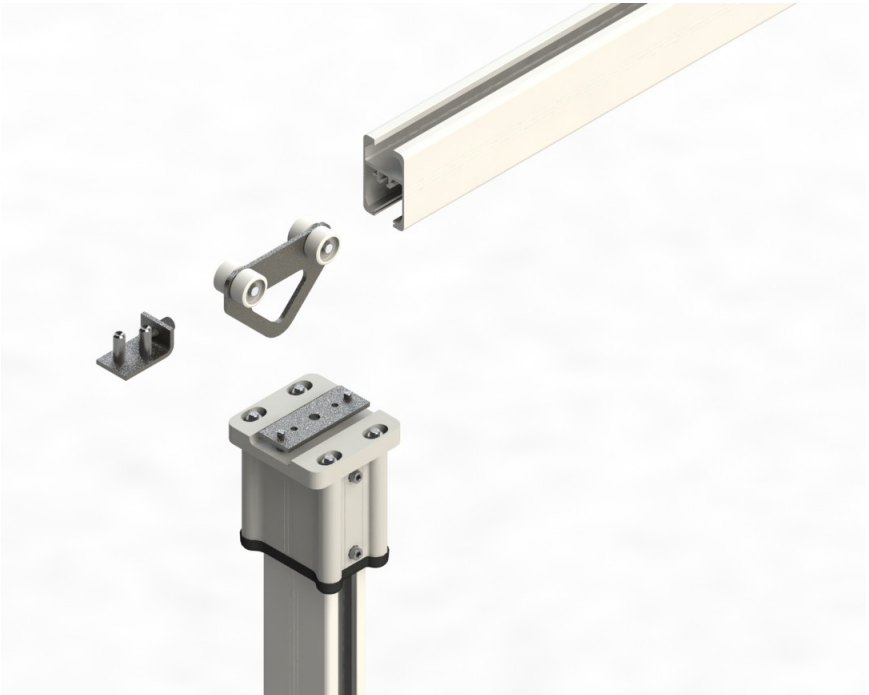
- 4 Tighten the screws (x8) to a torque of 20 N-m, +/-3 (15 lb-ft).

**Figure 7**



- 5 Insert the trolley (x1, ordered separately) and the end stoppers (x2).

**Figure 8**



- 6 Install the upper rail. Note that it must be installed flush with the outside of the post bracket. You may need a second person to help if the ceiling height is 96" to 98" (244 cm to 249 cm) as a precaution to avoid damaging the ceiling (see Figure 10).

**Figure 9**



**Figure 10**



**7** Tighten the screws (x4) to a torque of 20 N-m, +/-3 (15 lb-ft).

**Figure 11**



**8** Tighten the screws (x4) to a torque of 20 N-m, +/-3 (15 lb-ft).

**Figure 12**



9 Install the end caps (x2).

**Figure 13**



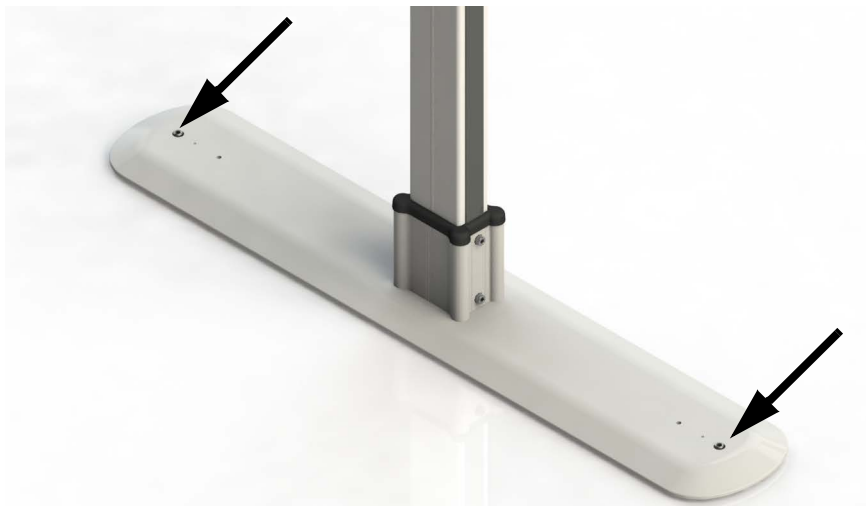
**10** Install the PVC strips (x4).

**Figure 14**



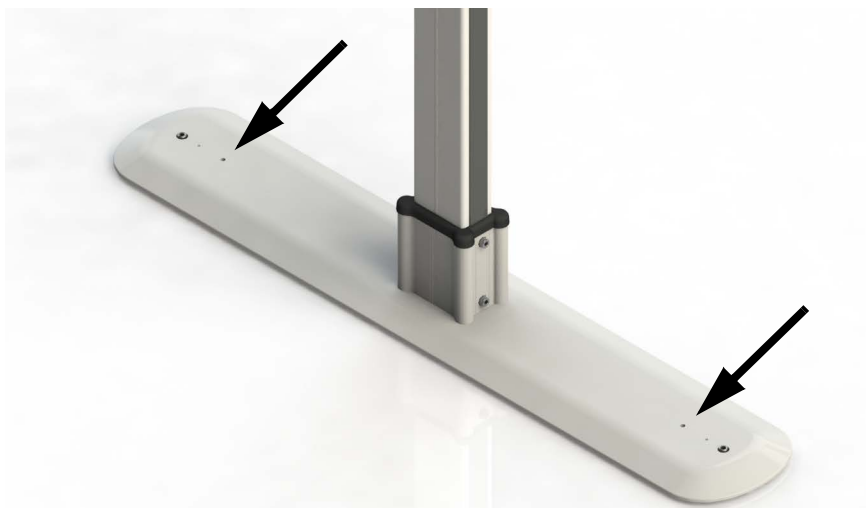
- 11** Adjust for level. Ensure there are no gaps over 1/4" (6 mm) to prevent children from trapping their fingers.

**Figure 15**












- 12** Optional - Use anchor bolts to attach the bases (x2) to the floor.

**Figure 16**






## Symbols

The following chart illustrates the symbols used on the nameplate, the packaging and the lift.

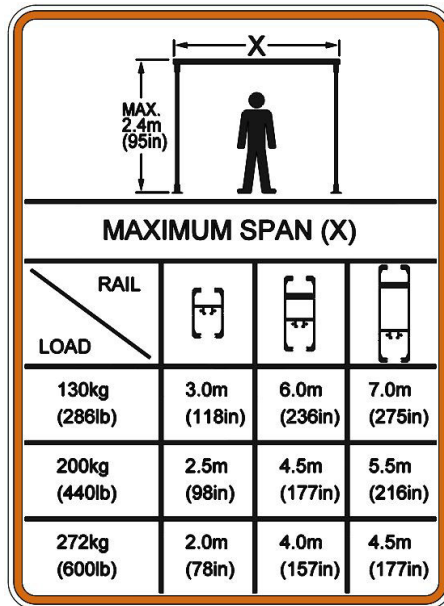
<b>Symbols on nameplate</b>	
	Indicates the product is a medical device according to EU Medical Device Regulation 2017/745
 YYYY-MM-DD	Indicates the medical device manufacturer. This symbol is accompanied by the address of the manufacturer and the date of the manufacture. YYYY: Represents the year MM: Represents the month DD: Represents the day
	Indicates the authorized representative in the European Community. This symbol is accompanied by the address of the authorized representative.
	Indicates the manufacturer's catalogue number
	Indicates the product complies with the medical device directive
	Indicates the manufacturer's batch number.
	Indicates the product complies with the directive
	Caution
	Consult instructions for use






<b>MAX . LOAD :</b>	Refers to the greatest permissible load that can be applied to the product
<b>Symbols on box label</b>	
	Indicates the temperature limits to which the medical device can be safely exposed
	Indicates the range of humidity to which the medical device can be safely exposed
	Indicates the range of atmospheric pressure to which the medical device can be safely exposed

## 4. SPECIFICATIONS

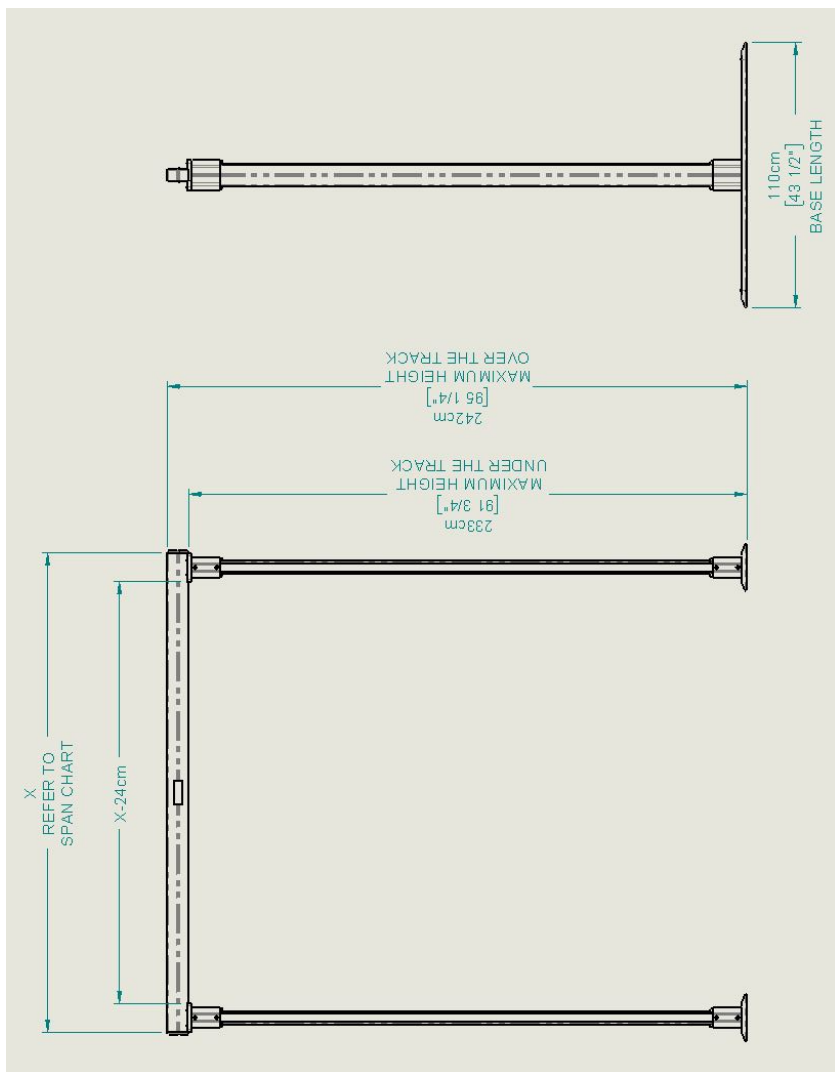
<b>Product</b>	
Product Weight	Base assembly: 32 kg (71 lb) Post: 7.2 kg each (16 lb each) Track: 3.14 kg/m (2.2 lb/ft)
Product Life	10 years
Safe Working Load (SWL)	130 kg (286 lb) or 200 kg (440 lb) or 272 kg (600 lb) depending on the span chart
<b>Environmental Conditions</b>	
Operating Temperature	5 °C to 40 °C (41 °F to 104 °F)
Operating Humidity	15 to 93%, non-condensing
Storage Temperature	-25 °C to 70 °C (-13 °F to 158 °F)
Storage Humidity	0 to 93%, non-condensing
Atmospheric Pressure	70 kPa to 106 kPa
<b>Compliance</b>	
ISO10535:2021,	
MDR (EU) 2017/745	



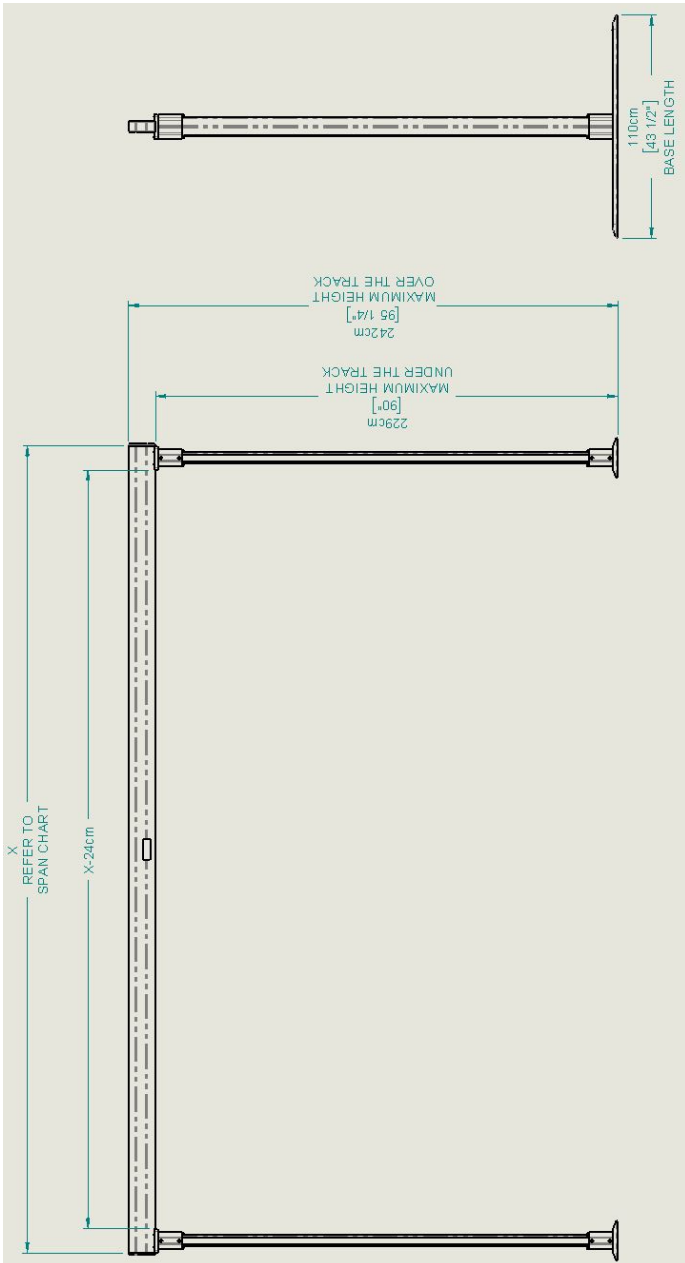
<b>MAXIMUM SPAN (X)</b>			
RAIL \ LOAD			
130kg (286lb)	3.0m (118in)	6.0m (236in)	7.0m (275in)
200kg (440lb)	2.5m (98in)	4.5m (177in)	5.5m (216in)
272kg (600lb)	2.0m (78in)	4.0m (157in)	4.5m (177in)

## Dimensions

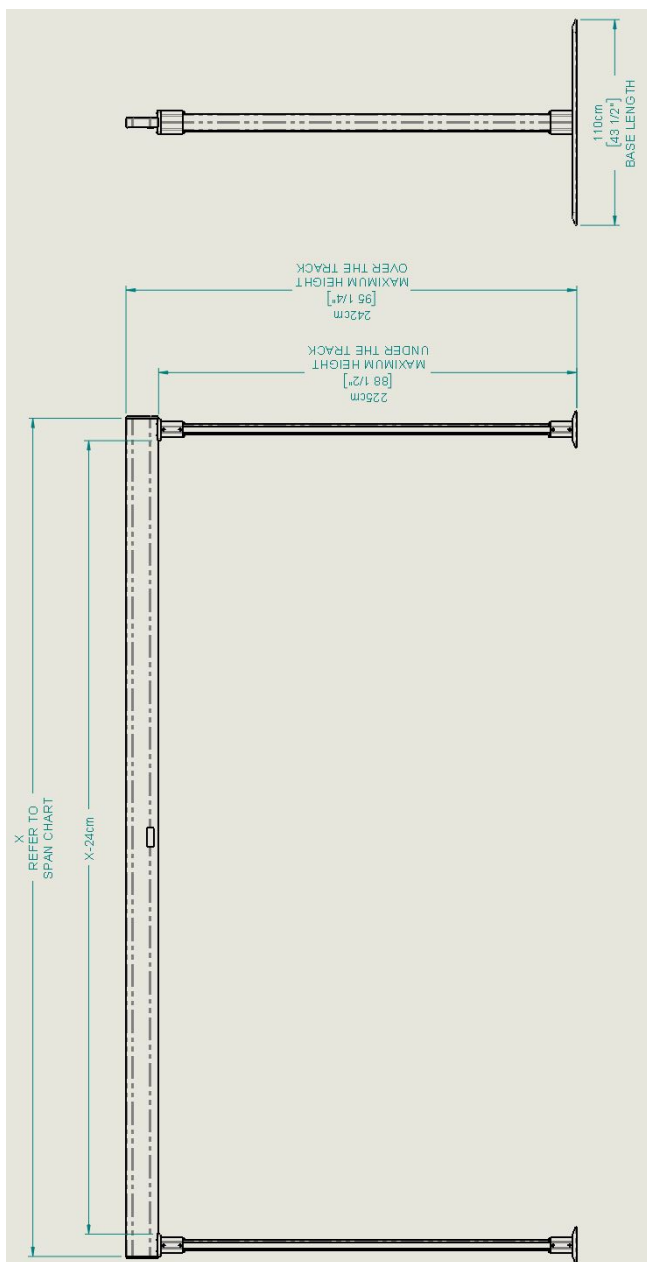
### FSS SD Dimensions



### FSS MD Dimensions



## FSS HD Dimensions



## 5. MAINTENANCE

The FSS is subject to wear and tear from use. You must perform the checks and actions in the following tables ensure safety and proper operation.



### WARNING

**Contact your Authorized Savaria Dealer to perform the Dealer Checks/Actions. Safety-related maintenance and service must be performed by an Authorized Savaria Dealer.**

**This maintenance schedules provides the minimum recommendations. In some cases, more frequent checks may be required per local regulations and codes.**

**To ensure safety of the person being transferred and the operator, do NOT use the equipment if a fault is found or if these regular checks have not been performed.**

### Operator Maintenance Schedule

Perform the following checks/actions as indicated. If any of the checks fail, contact your Authorized Savaria Dealer for service or replacement of parts.

<b>Operator Check/Action</b>	<b>Frequency</b>
Check the track and hardware for any damage	Before every use
Ensure the track end stops are securely in place	Before every use
Clean the track	Every 4 months
Check for any loose hardware and tighten as needed	Every 4 months
Check the track, hardware, and trolley wheels for damage	Every year

## Dealer Maintenance Schedule

Perform the checks/actions listed in the Operator Maintenance Schedule as well as those listed in the table below.

Dealer Check/Action	Frequency
Perform a load test on the FSS with the Safe Working Load	Every year
Check for any loose hardware and tighten as needed	Every year



**To avoid potential injury, use only Savaria parts when replacing parts.**

**To prevent the person from falling (or objects from falling) that may cause injuries to the person, the operator or other persons, always reinstall the track end stops if they were removed for servicing. Note that the recommended tightening torque is 20 N-m (15 lb-ft).**

**Figure 17**



## Inspection and Cleaning

To clean the FSS, wipe down the structure with a damp cloth using warm water and a cleaner. You can also use wipes that have a 70% v/v solution of isopropyl alcohol.

Do not use phenol, chlorine or any other type of solvent that may damage the finish.

Rub the FSS vigorously with the cloth or wipe to ensure thorough cleaning of the entire surface.

Dry all surfaces with a soft cloth.

**Authorized Savaria Dealer**

# **Ceiling Lift Free Standing Support OWNER'S MANUAL**

Part No. 001077-EN  
© Copyright 2022

Savaria Concord Lifts, Inc.  
2 Walker Drive  
Brampton, Ontario, L6T 5E1, Canada  
[www.savaria.com](http://www.savaria.com)

For service or questions about this product, please contact your installing dealer.

DEALER NAME: \_\_\_\_\_

DEALER PHONE: \_\_\_\_\_

